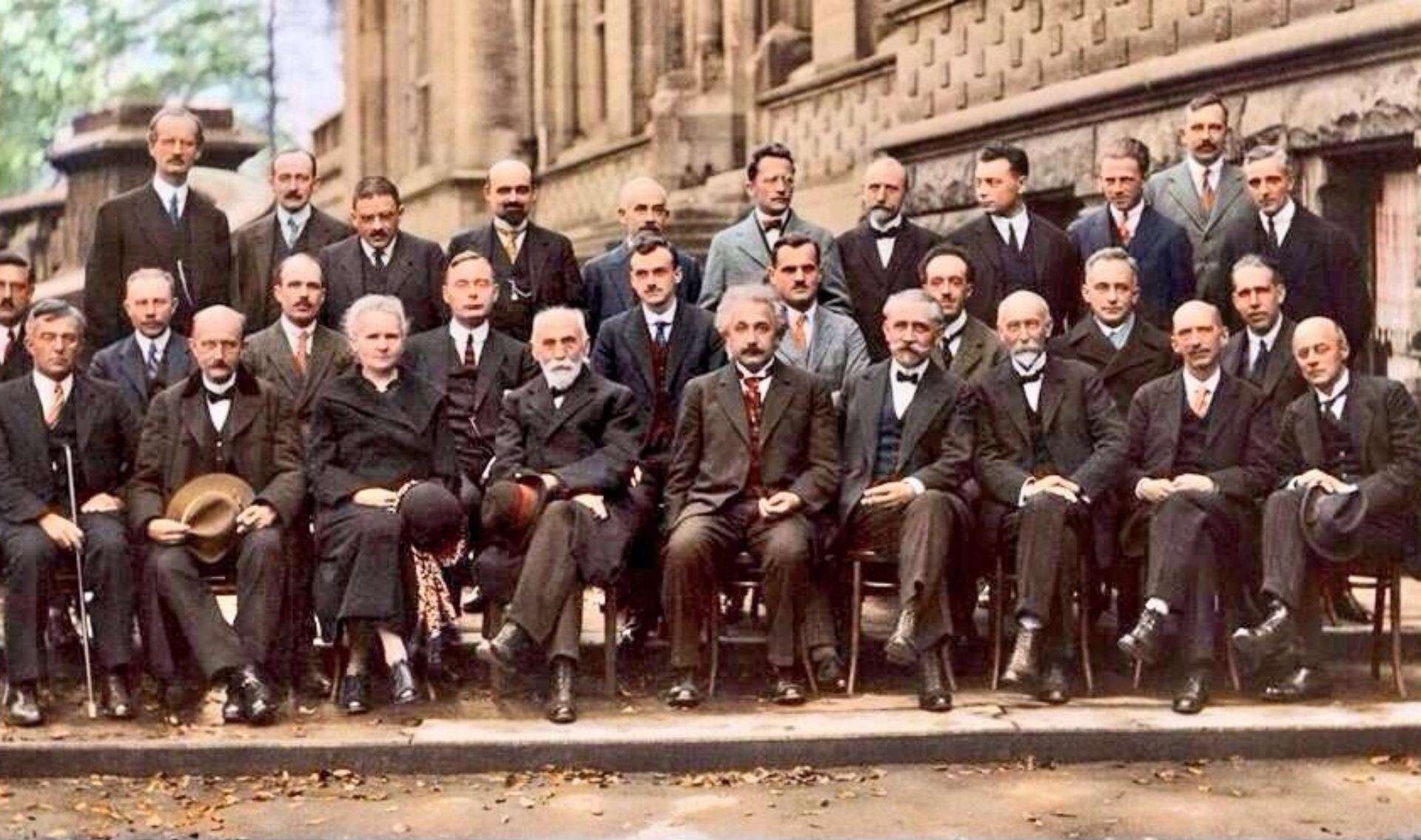


Situated knowledge & feminist critique of science

KULT8851 – 15.11.2023

sofia.moratti@ntnu.no



SOLVAY CONFERENCE 1927

colourized by pastincolour.com

A. PICARD E. HENRIOT P. EHRENFEST Ed. HERSEN Th. DE DONDER E. SCHRÖDINGER E. VERSCHAFFELT W. PAULI W. HEISENBERG R.H FOWLER L. BRILLOUIN
 M. KNUDSEN W.L. BRAGG H.A. KRAMERS P.A.M. DIRAC A.H. COMPTON L. de BROGLIE M. BORN N. BOHR
 LANGMUIR M. PLANCK Mme CURIE H.A. LORENTZ A. EINSTEIN P. LANGEVIN Ch.E. GUYE C.T.R. WILSON O.W. RICHARDSON

Absents : Sir W.H. BRAGG, H. DESLANDRES et E. VAN AUBEL

> Can you explain how you have supported and promoted diversity in your organisation?

and

> Your Pledge for Parity?

Manel of CEOs on women's day event,
Melbourne, Australia (2016)

nature

[Explore content](#) ▾

[About the journal](#) ▾

[Publish with us](#) ▾

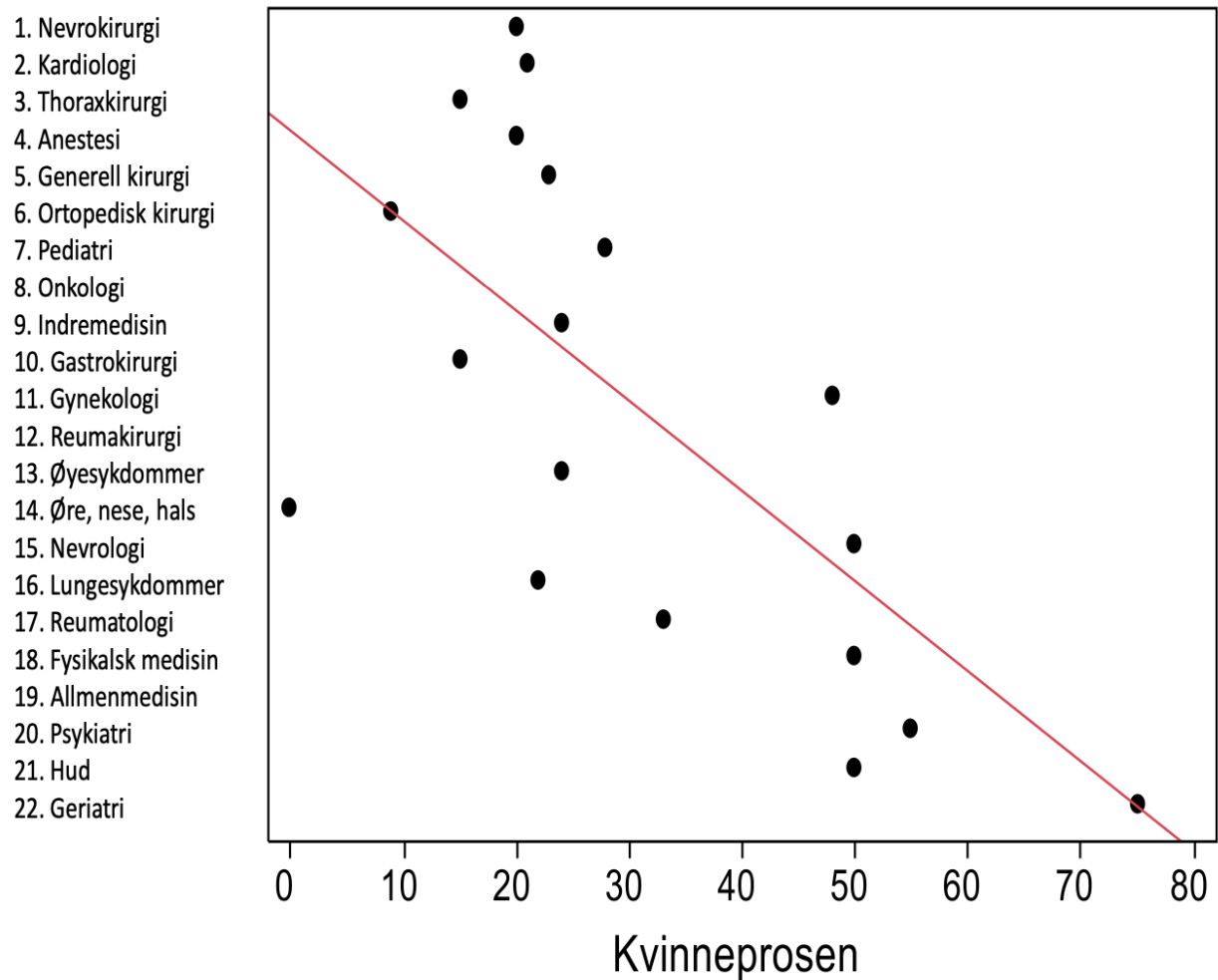
[Subscribe](#)

[nature](#) > [news feature](#) > [article](#)

NEWS FEATURE | 10 September 2019

How to banish manels and manferences from scientific meetings

Figur 1: Prestisje og kvinneandel i ulike medisinske spesialiteter.



REAL MEN DON'T COLLECT SOFT DATA

SILVIA GHERARDI, BARRY TURNER



Review

Diet, inflammation and the gut microbiome: Mechanisms for obesity- associated cognitive impairment

[Sarah-Jane Leigh](#), [Margaret J. Morris](#)  

[Show more](#) 

[+](#) [Add to Mendeley](#) [Share](#) [Cite](#)



thisisthinprivilege.tumblr.com



This is Thin Privilege

This is Thin Privilege

Gendered Innovations

in Science, Health & Medicine, Engineering, and Environment

| Home | Contributors | Links | Translations | Contact Us

Search The Site

ENVIRONMENT
ENGINEERING
HEALTH & MEDICINE
SCIENCE

What is Gendered Innovations?

SEX & GENDER ANALYSIS

General Methods

Specific Methods

Terms

Checklists

CASE STUDIES

Science

Animal Research

Health & Medicine

Animal Research 2

Engineering

Computer Science Curriculum

Environment

Genetics of Sex Determination

INTERSECTIONAL DESIGN

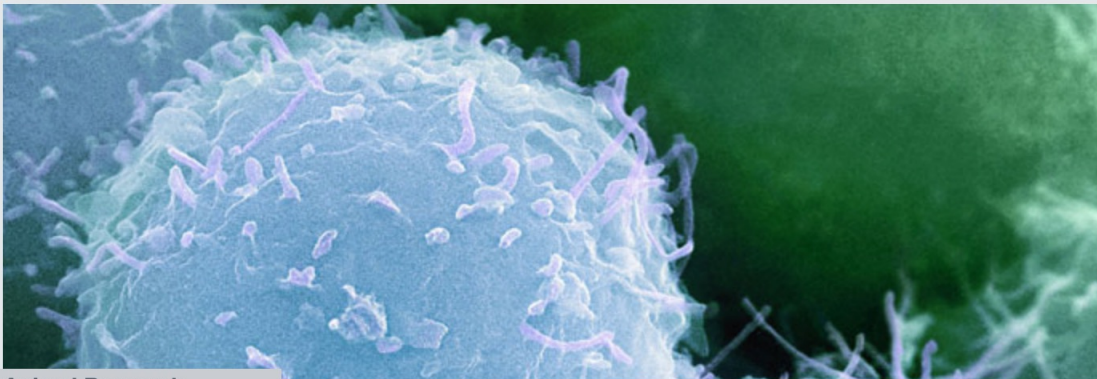
Stem Cells

POLICY RECOMMENDATIONS

Textbooks

VIDEOS

How to cite website



General Methods for Research | Gendered Innovations



Chronic Pain:



Facial Recognition: Analyzing Gender and

Why Gendered Innovations?

Gendered Innovations employs methods of sex, gender, and intersectional analysis to create new knowledge.

Sandra Harding (1935-)



Epistemology



Methodology



Standpoint theory



“Strong objectivity”



**Whose
Science?
Whose
Knowledge?**

**Sandra
Harding**

*Thinking
from
Women's
Lives*



[Sci Adv.](#) 2019 Oct; 5(10): eaaw7238.

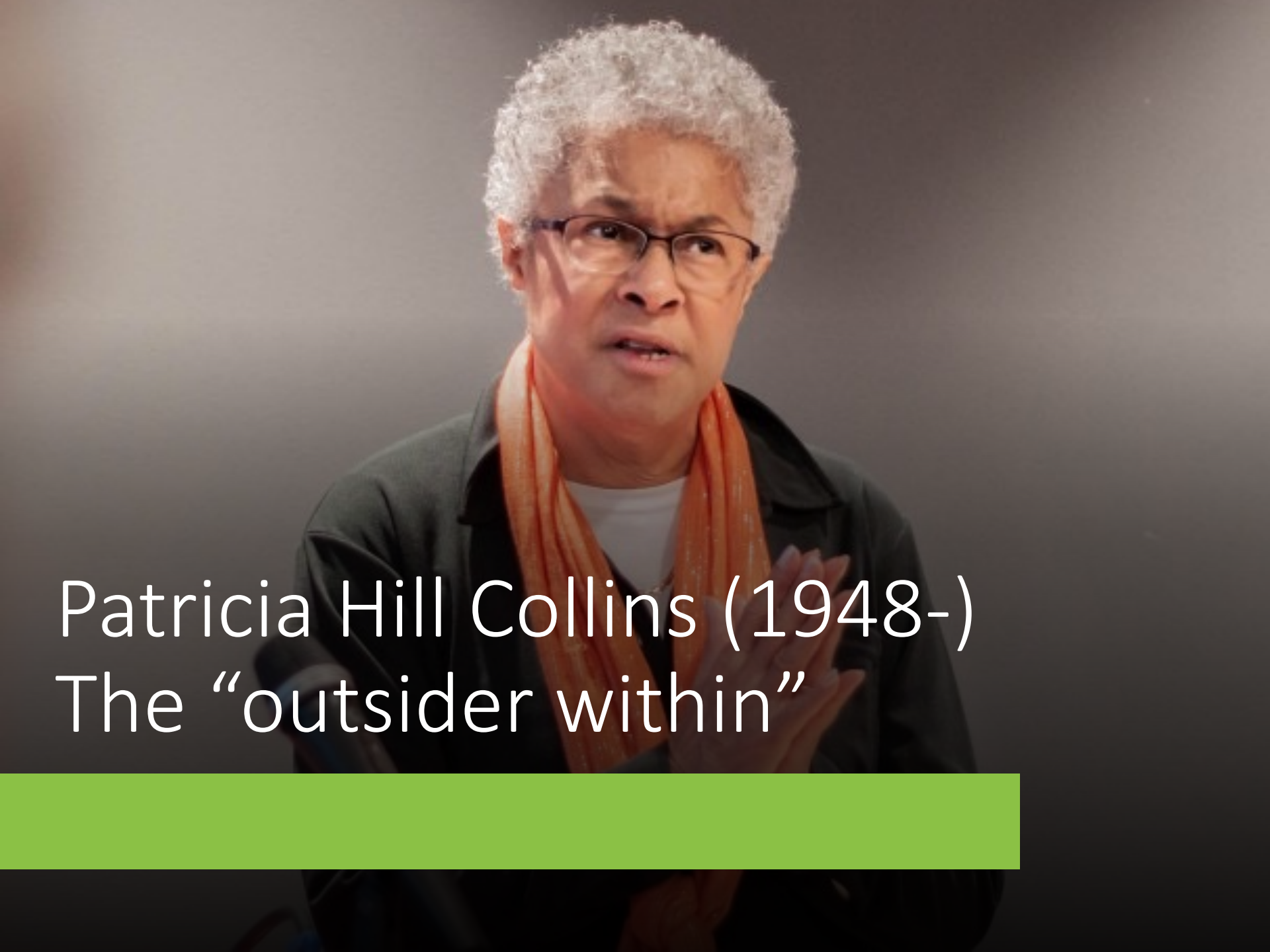
PMCID: PMC6785250

Published online 2019 Oct 9. doi: [10.1126/sciadv.aaw7238](https://doi.org/10.1126/sciadv.aaw7238)

PMID: [31633016](https://pubmed.ncbi.nlm.nih.gov/31633016/)

Topic choice contributes to the lower rate of NIH awards to African-American/black scientists

[Travis A. Hoppe](#),^{1,2} [Aviva Litovitz](#),^{1,2} [Kristine A. Willis](#),^{3,*} [Rebecca A. Meseroll](#),^{1,2} [Matthew J. Perkins](#),^{1,2}
[B. Ian Hutchins](#),^{1,2} [Alison F. Davis](#),⁴ [Michael S. Lauer](#),⁵ [Hannah A. Valantine](#),⁴ [James M. Anderson](#),² and
[George M. Santangelo](#)^{1,2,†}

A portrait of Patricia Hill Collins, an older woman with short, curly, light-colored hair, wearing glasses, a dark jacket, and an orange scarf. She is looking slightly to the right of the camera with a thoughtful expression. The background is a plain, light-colored wall.

Patricia Hill Collins (1948-)
The “outsider within”

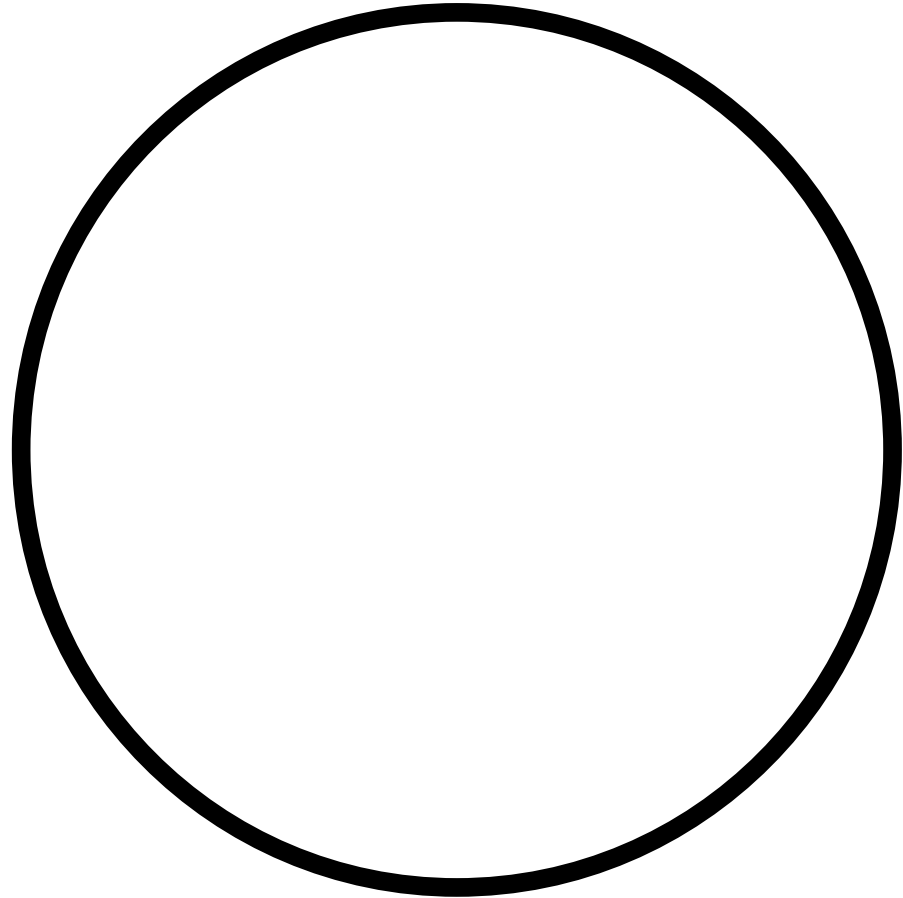


Striving to
become an
insider

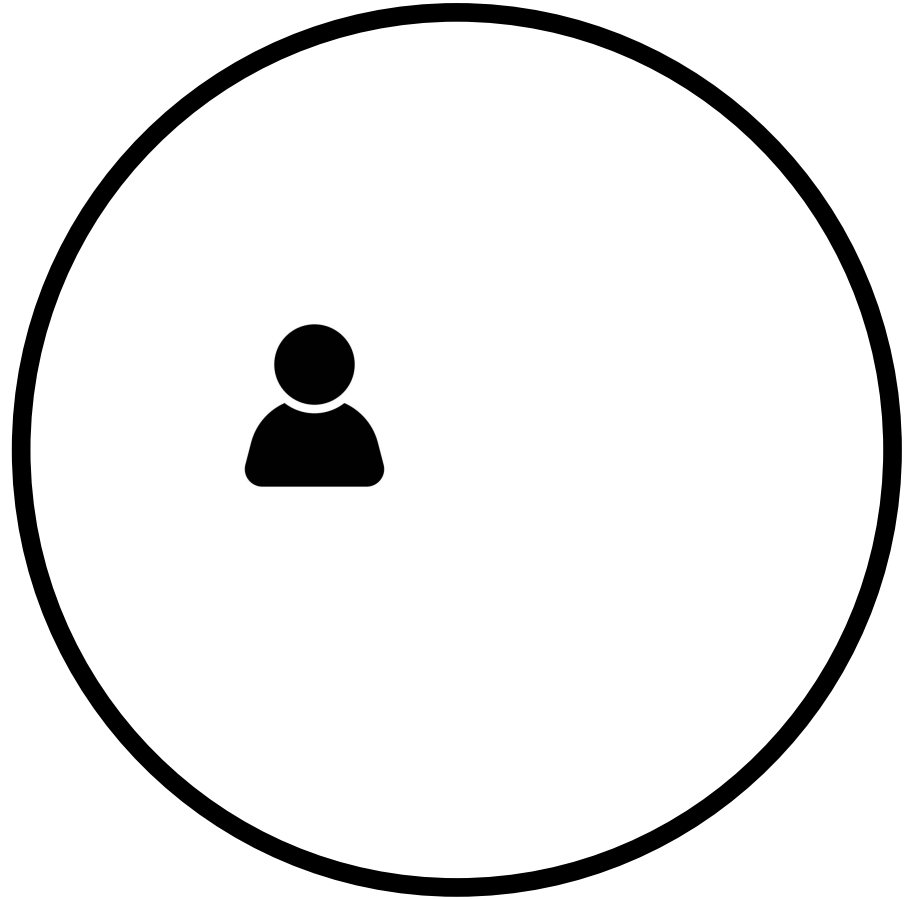
Challenging
existing
knowledge
paradigms



Where are you?



Where are you?



Donna Haraway (1944-)

“Situated
knowledge”

“Partial
perspective”

“To play the
God trick”



Vision and the lens (metaphors)

- Embodied, technologically mediated, **always partial**
- Infinite vision is an **illusion**: «to play the god trick»



Take-home message:

Your **social location** situates you as a knowing subject

- Your ascribed **social identities** (gender, race, sexual orientation, caste, class, kinship status, trans/cis etc.)
- The **social relations**/roles affected by these identities
- **Social norms** that prescribe different behaviour, values, emotions, and skills thought to be appropriate for your role
- **Your attitudes** toward your ascribed identities: pride, shame, affirmation, rejection...